

ES2000 Hotel Card Key Switch

With card identification function, different from traditional insert card for power

Luminescent LED indicator easy locate the button at night

10~30 seconds egress time delay

Ideal for guestroom in hotel, motel



Product Overview

Description

ES2000 series hotel card key switch is featured by innovative design, convenient and simple operation. The special card identification design facilitates hotel management. ES2000 series hotel card key switch is super-luxuriously designed with luminous LED indicators, and are made of PC fire resistant, insulating materials with a plurality of optional colors. With rated output current of 16 Ampere, it can completely replace traditional energy-saving switches.

Operation

All facilities will get the power once a corresponding card is inserted in its card key switch. When the key card is removed from its slot, the controlled circuits will have power for another 10~30 seconds to allow safe egress from the room before power is turned off. If you want to restore the power for the facilities, reinsert the card.

Applications

ES2000 Hotel card key switch is ideal for guestroom in hotel, motel, and boarding house. It can be access control equipment once install this card key switch. Moreover, it can control all fixed lamps and lanterns and switch socket.

Code Compliance

Products have been designed and produced in accordance with CE and RoHS requirement, with various performance indexes complying with BS4662 requirements. The products are fitting to british standard wall box and european wall box

Features

- ES2000 series intelligent hotel card key switch is designed for card recognition
- Compatible with building automation systems, energy management systems and lighting control panels
- Use the same card to unlock door and get power
- More efficiency than normal mechanical master switch because ES2000 card key switch ensure the electrical facilities will be turned off after the left of guest from a room
- Super-luxurious appearance design, with PC fire resistant, insulating material
- Design of luminous LED indicator can meet modern fashion; it can be easily identified at night
- Save power consumption 20%--30 %
- Egress time delay lets the guests leave safely and conveniently

Specification

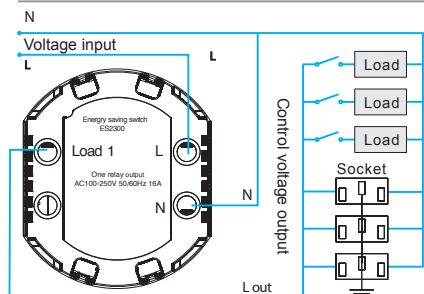
Voltage: 50/60Hz 190~240VAC
 Egress time delay: 10~30 seconds
 Load current: ≤ 16 A
 Service life: More than 100 thousand times for use while the relay with 220V load

Operate temperature: -10 ~60°C
 Operate humidity: 5°C~10 95% RH
 Dimension: W86mm×H86mm×D46mm

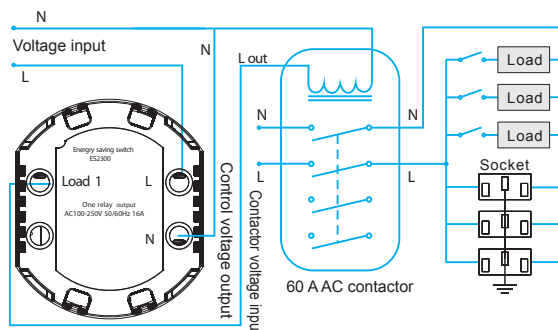
ES2000 Hotel Card Key Switch

Installation & Wiring

ES2000 Card key switch wiring

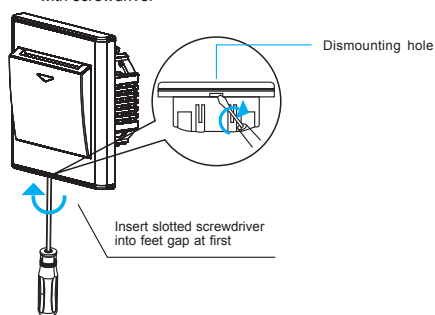


With AC contactor wiring

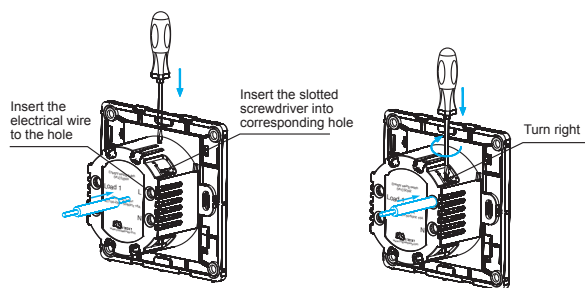


ES2000 Card key switch installation procedure

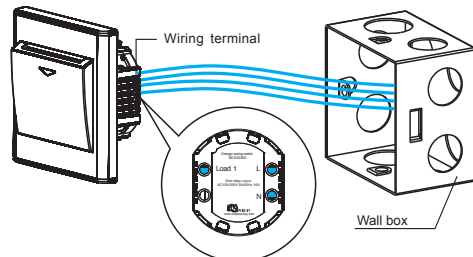
- 1 Open the cover plate of card key switch from driving parts box with screwdriver



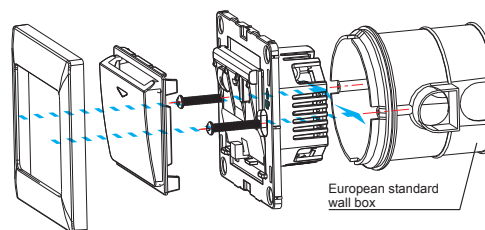
- 2 Wiring method



- 3 Draw out power cable and network cable from wall box and trim up, press tightly on terminal block as illustration



- 4 Card key switch installation procedure (See figure)



Ordering Information

ITEM	Rated operate current	Function description
ES2000N	16A	Any card for power, 10~30 seconds egress time delay (transparent card inapplicable)
ES2000RF	16A	T5557 Card for power 10~30 seconds egress time delay
ES2000M1	16A	Mifare one S50 Card for power 10~30 seconds egress time delay
ES2000MN	16A	Magnetic card for power 10 ~ 30 seconds egress time delay

Trouble Shooting Guide

Symptom	Possible cause	Solutions
No power after inserting card	1. Cut of Main switch or creepage protection switch	Turn on the main switch or creepage switch, if still trip, please check equipment if there is 'creepage'
	2. Incorrect wiring or poor contact	Read user manual carefully, and ensure that input wire and output wire are tightly fixed on the terminal blocks
	3. The heterogeneous card or wrong card is inserted	Ensure the card is correct
No power cut after taking out the card	1. Over current damage the relay	Tap power switch, please return it to the agent or the manufacturer if it's not resolved
	2. Blocks of contamination in card jack	Clean the switch card jack
No power output of magnetic card key switch	1. Magnetic card has been in the slot.	Take out card and insert again

Warning: Please install contactor to help connect the card key switch if this card key switch is as main switch to afford over current (i.e. air-condition system).